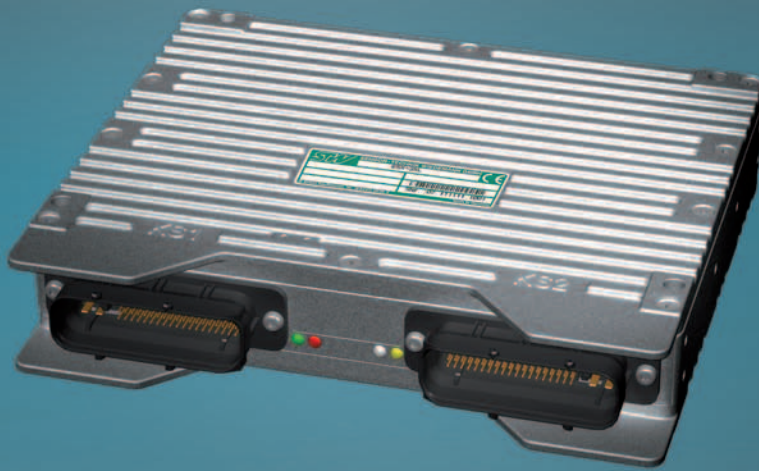


Pioneering new technologies
Pioneering new technologies



STW Technic, LP
Mobile Controllers and Measurement Technologies

ESX[®]-3XL



32 Bit - 150 MHz
high performance
124 I/Os



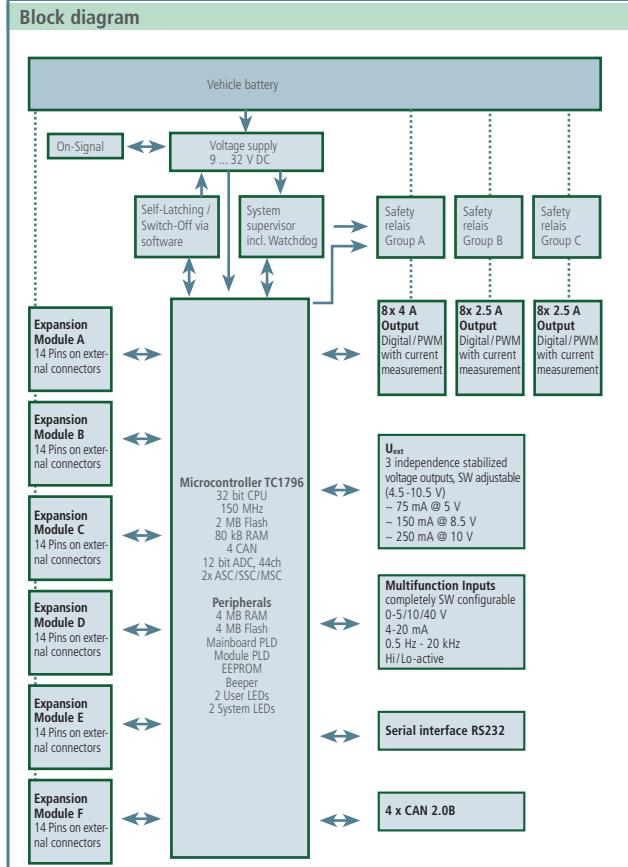
Freely programmable controllers for
vehicles and machines with CAN-BUS



ESX®-3XL - Technical Data

Processor system	
Processor	32 bit controller, TriCore TC1796, 150 MHz, system supervisor with programmable watchdog
SRAM	4 MByte external RAM, 80 kByte controller internal RAM
Flash	4 MByte external Flash, 2 MByte controller internal Flash
EEPROM	32 kByte
Interfaces	
CAN	4 controller internal CAN 2.0 B interfaces, full CAN, low-/high-speed up to 1 Mbit/s
RS232	programmable baud rate up to 115 kBit/s
Expansion boards	6 modules for more inputs and outputs or other functionalities
In-/Outputs (max. 124)	
Multifunction inputs	28 analog inputs , 4 to 20 mA or 0 to 5/10/40 V, cut-off-frequency 100 kHz, 12 Bit-A/D or 28 digital inputs , active high/low switchable or 28 rpm inputs , active high/low switchable, cut-off-frequency 20 kHz all inputs are short circuit protected and diagnosable
Digital/PWM outputs with current measurement	8 x 4 A , high side, 0 to 100 % 16 x 2.5 A , high side, 0 to 100 % all outputs are short circuit protected and diagnosable
PVG outputs	or 16 x PVG for Danfoss valves (20 % U_B to 80 % U_B)
Voltage outputs	3 independt stabilized voltage supplies , programmable, 5 V to 10 V
Expansion boards	max. 6 modules , with up to 14 inputs or outputs each, for e.g. digital or analog I/O, encoder inputs, motor bridge, communication Interfaces or customer specific designs
System data	
Voltage supply	8 to 32 V DC
Indicators	buzzer, 4 status LEDs (two colored)
Current requirements	operational from 200 mA (24 V) to 350 mA (12 V) stand-by < 1 mA
Physical characteristics	
Connector	2 x 81 pin automotive type (TYCO) (matching plug: Tyco 1473244-1)
Chassis	IP 67 (optional IP 69), die-cast aluminum, GORE-TEX®-breathing filter for pressure equalization
Weight	approx. 2.5 kg (5.5 lbs)
Dimension	approx. 248 mm x 217 mm x 51 mm (9.76" x 8.54" x 2.01")

EMC, Environmental requirements	
Requirements	according to automotive, agricultural and construction industry standards; CE-conformity
Operating temperature	-40°C to +85°C (-40°F ... +185°F) chassis temperature
Software	
Programming	freely programmable, using CoDeSys (IEC61131) or in high level language C (comfortable API-library)



Sensor-Technik Wiedemann GmbH
Steuer- und Regelelektronik
 Am Bärenwald 6
 D-87600 Kaufbeuren
 GERMANY
 Telephone +49 (0) 8341-9505-0
 Telefax +49 (0) 8341-9505-55
 E-Mail info@sensor-technik.de
 Internet www.sensor-technik.de

STW-TECHNIC, LP
MOBILE CONTROLLERS AND
MEASUREMENT TECHNOLOGIES
 3000 Northwoods Pkwy. Suite 260
 Norcross, GA 30071 USA
 Telephone +1(770) 242-1002
 Telefax +1(770) 242-1006
 E-Mail sales@stw-technic.com
 Internet www.stw-technic.com

Sensor-Technik UK Ltd.
 Unit 10, The Granary
 Mill Road, Sharnbrook
 Bedfordshire MK44 1NN
 ENGLAND
 Telephone +44 (0) 12 34-7820-49
 Telefax +44 (0) 12 34-7820-56
 E-Mail sales@sensor-technik.co.uk
 Internet www.sensor-technik.co.uk